



## AVK DOUBLE ECCENTRIC BUTTERFLY VALVE, PN25

756/100-772

Stainless steel seat, IP67 gearbox, plate disc, long, DN150-1200

AVK double eccentric butterfly valves are designed with tilted disc for easy operation. The disc seal is made of AVK's drinking water approved EPDM rubber featuring an excellent compression set and thus ability to regain its original shape. The high quality epoxy coating and fully encapsulated shaft/disc connection ensure high durability. The valves are suitable for bi-directional application.

### Product description:

Double eccentric butterfly valve to EN 593 w. SS seat and IP67 gearbox w. handwheel - PN 25 for drinking water and neutral liquids to max. 70°C

### Standards:

- Designed according to EN 593
- Face-to-face dimension according to EN 558 Table 2 Basic Series 14
- Standard flange drilling to EN1092-2 (ISO 7005-2), PN25

### Test/Approvals:

- Hydraulic test according to EN 1074-1 and 2 / EN 12266
- Approved for drinking water

### Features:

- The tilted disc releases the compression of the disc sealing after a few degrees of opening resulting in low operating torque
- The disc seal profile and rubber quality ensure low closing torques
- All rubber parts are multi approved
- Seal retainer ring of stainless steel
- The threaded bolt holes in the disc are corrosion protected with O-rings
- Replaceable seat ring of stainless steel fixed with bolts sealed with epoxy and sealed with an O-ring
- Shaft of stainless steel with self-lubricating bearings
- The shaft ends are fully encapsulated in the disc and are fixed with dowels corrosion protected with O-rings and a stainless steel security plate. Key and keyway as backup
- Replaceable shaft sealing with two EPDM O-rings on each side of a bronze bushing, and a flat NBR gasket
- Body and disc of ductile iron with fusion bonded epoxy coating in compliance with DIN 3476 part 1 and EN 14901, GSK approved, RAL 5017, according to WRAS-DVGW/W270/UBA

### Accessories:

Extension spindle, street cover, dismantling joint and flange adaptor

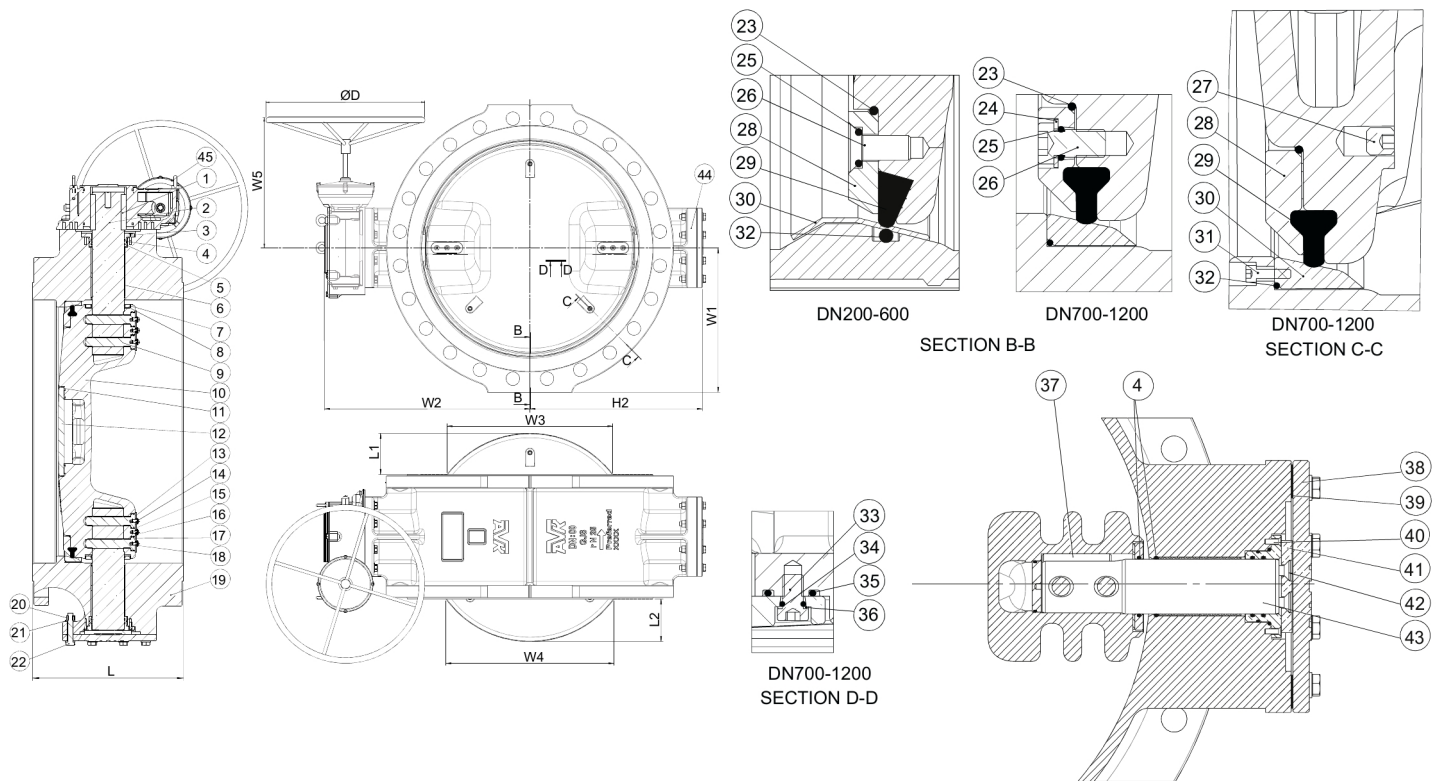


Expect ... **AVR**

# AVK DOUBLE ECCENTRIC BUTTERFLY VALVE, PN25

756/100-772

Stainless steel seat, IP67 gearbox, plate disc, long, DN150-1200



## Component list:

1. Key	Stainless steel A2	24. Washer <sup>(1)</sup>	Stainless steel A2
2. Drive shaft	Stainless steel 431	25. O-ring	EPDM rubber
3. Seal housing	Bronze	26. Bolt	Stainless steel A2
4. O-ring	EPDM rubber	27. Screw	Stainless steel A2
5. O-ring	EPDM rubber	28. Seal retainer ring	Stainless steel 420
6. Self-lubricating bearing	Bronze / PTFE composite	29. Disc seal	EPDM rubber
7. Disc cover <sup>(1)</sup>	Stainless steel	30. Body ring	Stainless steel 420
8. Disc cover gasket <sup>(1)</sup>	EPDM rubber	31. Screw <sup>(1)</sup>	Stainless steel A2
9. Dowel	Stainless steel	32. O-ring	EPDM rubber
10. Disc	Ductile iron GJS-500-7 (GGG-50)	33. Bolt <sup>(1)</sup>	Stainless steel A2
11. O-ring <sup>(1)</sup>	EPDM rubber	34. O-ring <sup>(1)</sup>	EPDM rubber
12. Centre flange <sup>(1)</sup>	Ductile iron GJS-500-7 (GGG-50)	35. O-ring <sup>(1)</sup>	EPDM rubber
13. Security plate	Stainless steel	36. Washer <sup>(1)</sup>	Stainless steel A2
14. Screw	Stainless steel A2	37. Safety key <sup>(1)</sup>	Stainless steel A2
15. O-ring	EPDM rubber	38. End plate	Ductile iron GJS-500-7 (GGG-50)
16. Spring washer	Stainless steel A2	39. Gasket	EPDM rubber
17. Washer	Zinc	40. Screw	Stainless steel A2
18. O-ring	EPDM rubber	41. Thrust bearing	Bronze
19. Body	Ductile iron GJS-500-7 (GGG-50)	42. Screw	Stainless steel A2
20. Nut	Stainless steel A2	43. Stub shaft	Stainless steel 431
21. Washer	Stainless steel A2	44. Screw	Stainless steel A2
22. Bolt	Stainless steel A2	45. Gearbox	Cast iron
23. O-ring	EPDM rubber		

Components may be substituted with equivalent or higher class materials without prior notification.

The designs, materials and specifications shown are subject to change without notice. This is due to the continuous development of our product programme.

**AVK DOUBLE ECCENTRIC BUTTERFLY VALVE, PN25****756/100-772****Stainless steel seat, IP67 gearbox, plate disc, long, DN150-1200****Reference nos. and dimensions:**

AVK ref. no.	DN mm	Flange drilling	D mm	L mm	L1 mm	L2 mm	H2 mm	W1 mm	W2 mm	W3 mm	W4 mm	W5 mm	Theoretical weight/kg
756-0150-1-7400009	150	PN25	300	210	-	-	192	162	254	-	-	282	38
756-0200-1-7400009	200	PN25	250	230	-	-	226	190	288	-	-	277	57
756-0250-1-7400009	250	PN25	400	250	-	-	268	223	333	-	-	306	92
756-0300-1-7400009	300	PN25	400	270	1	12	303	253	368	17	115	306	117
756-0350-1-7400009	350	PN25	400	290	19	25	331	288	393	155	176	306	151
756-0400-1-7400009	400	PN25	400	310	34	40	373	320	435	217	234	306	190
756-0450-1-7400009	450	PN25	600	330	48	54	411	345	503	270	285	461	258
756-0500-1-7400009	500	PN25	600	350	63	69	454	375	546	325	338	461	306
756-0600-1-7400009	600	PN25	700	390	92	98	541	430	632	424	435	449	484
756-0700-1-7400009	700	PN25	700	430	124	130	566	483	706	527	537	570	665
756-0800-1-7400009	800	PN25	700	470	155	161	650	546	815	626	635	570	873
756-0900-1-7400009	900	PN25	700	510	185	191	701	593	865	721	729	570	1129
756-1000-1-7400009	1000	PN25	700	550	216	222	771	663	935	813	824	570	1426
756-1200-1-7400009	1200	PN25	700	630	268	272	899	768	1031	982	987	630.5	2308

The designs, materials and specifications shown are subject to change without notice. This is due to the continuous development of our product programme.