



AVK DUCKFOOT BEND FLANGED, PN 10/16

712/7010-001



AVK's range of fittings comprises a wide selection of variants with socket and flange connection. The fittings are made of ductile iron GJS-500-7 and are epoxy coated according to DIN 30677-2 and GSK specifications - internally and externally.



Product description:

Double flanged duckfoot bend type N to EN 545 for water, waste water and neutral liquids to max. 70° C

Design standards:

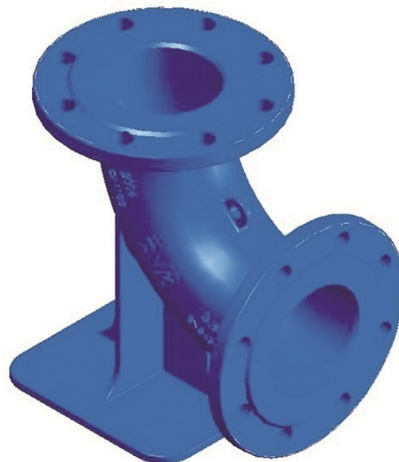
- EN 545
- Flange drilling to EN1092, PN10/16

Test/Approvals:

- Belgaqua approved material

Features:

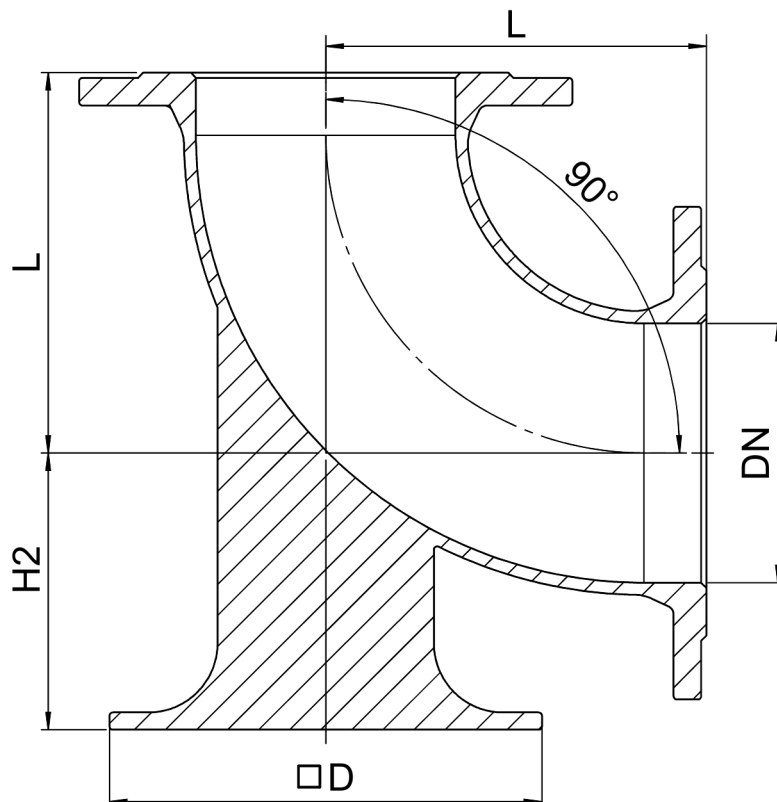
- Ductile iron fitting to EN 545
- Body of GJS-500-7
- Epoxy coated to DIN 3476 and GSK internally and externally



BELGAQUA

Expect... **AVK**

The designs, materials and specifications shown are subject to change without notice due to the continuous development of our product range.



Component list:

1. Fitting	Ductile Iron
------------	--------------

Components may be substituted with equivalent or higher class materials without prior notification.

Reference nos. and dimensions:

AVK ref. no.	DN mm	Flange drilling	L mm	D mm	H2 mm	Theoretical weight/kg
712-0080-70-101	80	PN10/16	165	180	110	12
712-0100-70-101	100	PN10/16	180	200	125	15
712-0150-70-101	150	PN10/16	220	250	160	25
712-0200-70-100	200	PN10	260	300	190	52
712-0200-70-101	200	PN16	260	300	190	52
712-0250-70-100	250	PN10	350	350	225	84
712-0250-70-101	250	PN16	350	350	225	84
712-0300-70-100	300	PN10	400	400	255	119
712-0300-70-101	300	PN16	400	400	255	119
712-0350-70-100	350	PN10	450	450	290	112
712-0350-70-101	350	PN16	450	450	290	120
712-0400-70-100	400	PN10	500	500	320	148
712-0400-70-101	400	PN16	500	500	320	159
712-0450-70-100	450	PN10	550	550	355	189
712-0450-70-101	450	PN16	550	550	355	211
712-0500-70-100	500	PN10	600	600	385	229
712-0500-70-101	500	PN16	600	600	385	259
712-0600-70-100	600	PN10	700	700	450	341
712-0600-70-101	600	PN16	700	700	450	393