



AVK BLIND FLANGE W/INTERNAL THREAD

712/3910-045

Thread M40X3 / M55X3, PN10/16

AVK's range of fittings comprises a wide selection of variants with socket and flange connection. The fittings are made of ductile iron GJS-500-7 and are epoxy coated according to DIN 3476 and GSK specifications - internally and externally.

Product description:

Blind flange with internal M40X3 / M55X3 thread type XI to EN 545 for water, waste water and neutral liquids to max. 70° C

Design standards:

- EN 545
- Flange drilling to EN1092, PN10/16

Test/Approvals:

- Belgaqua approved material

Features:

- Ductile iron fitting to EN 545
- Body of GJS-500-7
- Epoxy coated to DIN 3476 and GSK internally and externally



BELGAQUA

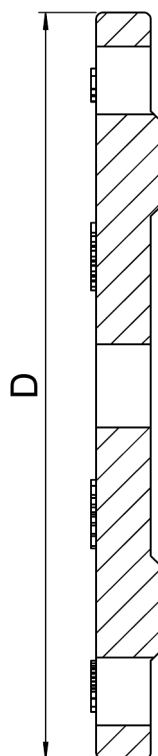
Expect... **AVR**

The designs, materials and specifications shown are subject to change without notice due to the continuous development of our product range.

AVK BLIND FLANGE W/INTERNAL THREAD

712/3910-045

Thread M40X3 / M55X3, PN10/16



Reference nos. and dimensions:

| AVK ref. no. | DN mm | Flange drilling | D mm | Theoretical weight/kg |
|------------------------|----------|--------------------|---------|--------------------------|
| 712-0040-39-101040 (1) | 40 | PN10/16 | 150 | 1.9 |
| 712-0040-39-101055 (2) | 40 | PN10/16 | 150 | 1.9 |
| 712-0050-39-101040 (1) | 50 | PN10/16 | 165 | 2.4 |
| 712-0050-39-101055 (2) | 50 | PN10/16 | 165 | 2.4 |
| 712-0060-39-101040 (1) | 60 | PN10/16 | 175 | 2.6 |
| 712-0060-39-101055 (2) | 60 | PN10/16 | 175 | 2.6 |
| 712-0065-39-101040 (1) | 65 | PN10/16 | 185 | 3.0 |
| 712-0065-39-101055 (2) | 65 | PN10/16 | 185 | 3.0 |
| 712-0080-39-101040 (1) | 80 | PN10/16 | 200 | 3.4 |
| 712-0080-39-101055 (2) | 80 | PN10/16 | 200 | 3.4 |
| 712-0100-39-101040 (1) | 100 | PN10/16 | 220 | 4.2 |
| 712-0100-39-101055 (2) | 100 | PN10/16 | 220 | 4.2 |
| 712-0125-39-101040 (1) | 125 | PN10/16 | 250 | 5.5 |
| 712-0125-39-101055 (2) | 125 | PN10/16 | 250 | 5.5 |
| 712-0150-39-101040 (1) | 150 | PN10/16 | 285 | 7.1 |
| 712-0150-39-101055 (2) | 150 | PN10/16 | 285 | 7.1 |
| 712-0200-39-100040 (1) | 200 | PN10 | 340 | 11 |
| 712-0200-39-100055 (2) | 200 | PN10 | 340 | 11 |
| 712-0200-39-101040 (1) | 200 | PN16 | 340 | 11 |
| 712-0200-39-101055 (2) | 200 | PN16 | 340 | 11 |
| 712-0250-39-100040 (1) | 250 | PN10 | 400 | 16 |
| 712-0250-39-100055 (2) | 250 | PN10 | 400 | 16 |
| 712-0250-39-101040 (1) | 250 | PN16 | 400 | 17 |
| 712-0250-39-101055 (2) | 250 | PN16 | 400 | 16 |
| 712-0300-39-100040 (1) | 300 | PN10 | 455 | 23 |
| 712-0300-39-100055 (2) | 300 | PN10 | 455 | 23 |
| 712-0300-39-101040 (1) | 300 | PN16 | 455 | 24 |
| 712-0300-39-101055 (2) | 300 | PN16 | 455 | 23 |

The designs, materials and specifications shown are subject to change without notice due to the continuous development of our product range.

AVK BLIND FLANGE W/INTERNAL THREAD**712/3910-045****Thread M40X3 / M55X3, PN10/16****Reference nos. and dimensions:**

| AVK ref. no. | DN mm | Flange drilling | D mm | Theoretical weight/kg |
|------------------------|----------|--------------------|---------|--------------------------|
| 712-0400-39-100040 (1) | 400 | PN10 | 565 | 44 |
| 712-0400-39-100055 (2) | 400 | PN10 | 565 | 44 |
| 712-0400-39-101040 (1) | 400 | PN16 | 580 | 44 |
| 712-0400-39-101055 (2) | 400 | PN16 | 580 | 44 |
| 712-0500-39-100040 (1) | 500 | PN10 | 670 | 77 |
| 712-0500-39-100055 (2) | 500 | PN10 | 670 | 77 |
| 712-0500-39-101040 (1) | 500 | PN16 | 715 | 77 |
| 712-0500-39-101055 (2) | 500 | PN16 | 715 | 77 |
| 712-0600-39-100040 (1) | 600 | PN10 | 780 | 121 |
| 712-0600-39-100055 (2) | 600 | PN10 | 780 | 121 |
| 712-0600-39-101040 (1) | 600 | PN16 | 840 | 121 |
| 712-0600-39-101055 (2) | 600 | PN16 | 840 | 121 |

(1) Center hole thread M40X3
(2) Center hole thread M55X3