



AVK BLIND FLANGE W/INTERNAL BSP

712/3910-010

BSP thread 1" - 1 1/2", PN 10/16

AVK's range of fittings comprises a wide selection of variants with socket and flange connection. The fittings are made of ductile iron GJS-500-7 and are epoxy coated according to DIN 3476 and GSK specifications - internally and externally.

Product description:

Blind flange with internal BSP thread type XI to EN 545 for water, waste water and neutral liquids to max. 70° C

Design standards:

- EN 545
- Flange drilling to EN1092, PN10/16

Test/Approvals:

- Belgaqua approved material

Features:

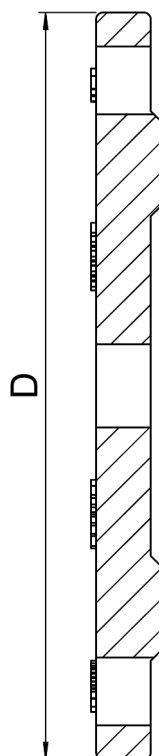
- Ductile iron fitting to EN 545
- Body of GJS-500-7
- Epoxy coated to DIN 3476 and GSK internally and externally



BELGAQUA

Expect... **AVK**

The designs, materials and specifications shown are subject to change without notice due to the continuous development of our product range.



Reference nos. and dimensions:

AVK ref. no.	DN mm	Flange drilling	D mm	Theoretical weight/kg
712-0040-39-101010 (1)	40	PN10/16	150	1.9
712-0040-39-101012 (2)	40	PN10/16	150	1.9
712-0040-39-101015 (3)	40	PN10/16	150	1.9
712-0050-39-101010 (1)	50	PN10/16	165	2.4
712-0050-39-101012 (2)	50	PN10/16	165	2.4
712-0050-39-101015 (3)	50	PN10/16	165	2.4
712-0060-39-101010 (1)	60	PN10/16	175	2.6
712-0060-39-101012 (2)	60	PN10/16	175	2.6
712-0060-39-101015 (3)	60	PN10/16	175	2.6
712-0065-39-101010 (1)	65	PN10/16	185	3.0
712-0065-39-101012 (2)	65	PN10/16	185	3.0
712-0065-39-101015 (3)	65	PN10/16	185	3.0
712-0080-39-101010 (1)	80	PN10/16	200	3.4
712-0080-39-101012 (2)	80	PN10/16	200	3.4
712-0080-39-101015 (3)	80	PN10/16	200	3.4
712-0100-39-101010 (1)	100	PN10/16	220	4.2
712-0100-39-101012 (2)	100	PN10/16	220	4.2
712-0100-39-101015 (3)	100	PN10/16	220	4.2
712-0125-39-101010 (1)	125	PN10/16	250	5.5
712-0125-39-101012 (2)	125	PN10/16	250	5.5
712-0125-39-101015 (3)	125	PN10/16	250	5.5
712-0150-39-101010 (1)	150	PN10/16	285	7.1
712-0150-39-101012 (2)	150	PN10/16	285	7.1
712-0150-39-101015 (3)	150	PN10/16	285	7.1
712-0200-39-100010 (1)	200	PN10	340	11
712-0200-39-100012 (2)	200	PN10	340	11
712-0200-39-100015 (3)	200	PN10	340	11
712-0200-39-101010 (1)	200	PN16	340	11

The designs, materials and specifications shown are subject to change without notice due to the continuous development of our product range.

AVK BLIND FLANGE W/INTERNAL BSP**712/3910-010****BSP thread 1" - 1 1/2", PN 10/16****Reference nos. and dimensions:**

AVK ref. no.	DN mm	Flange drilling	D mm	Theoretical weight/kg
712-0200-39-101012 (2)	200	PN16	340	11
712-0200-39-101015 (3)	200	PN16	340	11
712-0250-39-100010 (1)	250	PN10	400	16
712-0250-39-100012 (2)	250	PN10	400	16
712-0250-39-100015 (3)	250	PN10	400	16
712-0250-39-101010 (1)	250	PN16	400	16
712-0250-39-101012 (2)	250	PN16	400	17
712-0250-39-101015 (3)	250	PN16	400	17
712-0300-39-100010 (1)	300	PN10	455	23
712-0300-39-100012 (2)	300	PN10	455	23
712-0300-39-100015 (3)	300	PN10	455	23
712-0300-39-101010 (1)	300	PN16	455	24
712-0300-39-101012 (2)	300	PN16	455	23
712-0300-39-101015 (3)	300	PN16	455	24
712-0400-39-100010 (1)	400	PN10	565	44
712-0400-39-100012 (2)	400	PN10	565	44
712-0400-39-100015 (3)	400	PN10	565	44
712-0400-39-101010 (1)	400	PN16	580	44
712-0400-39-101012 (2)	400	PN16	580	44
712-0400-39-101015 (3)	400	PN16	580	44
712-0500-39-100010 (1)	500	PN10	670	77
712-0500-39-100012 (2)	500	PN10	670	77
712-0500-39-100015 (3)	500	PN10	670	77
712-0500-39-101010 (1)	500	PN16	715	77
712-0500-39-101012 (2)	500	PN16	715	77
712-0500-39-101015 (3)	500	PN16	715	77
712-0600-39-100010 (1)	600	PN10	780	123
712-0600-39-100012 (2)	600	PN10	780	123
712-0600-39-100015 (3)	600	PN10	780	121
712-0600-39-101010 (1)	600	PN16	840	121
712-0600-39-101012 (2)	600	PN16	840	121
712-0600-39-101015 (3)	600	PN16	840	121

(1) BSP thread 1" (26x34)
(2) BSP thread 1½" (40x49)
(3) BSP thread 1 1/4" (33x42)