



## AVK FLANGED BEND 90°, PN10/16

712/0610-001



AVK's range of fittings comprises a wide selection of variants with socket and flange connection. The fittings are made of ductile iron min. GJS-400 (GGG-40) and are epoxy coated according to DIN 3476 and GSK specifications - internally and externally.



### Product description:

Double flanged bend 90° type FFQ to EN 545 for water, waste water and neutral liquids to max. 70° C

### Design standards:

- EN 545
- Flange drilling to EN1092, PN10/16

### Test/Approvals:

- Belgaqua approved material

### Features:

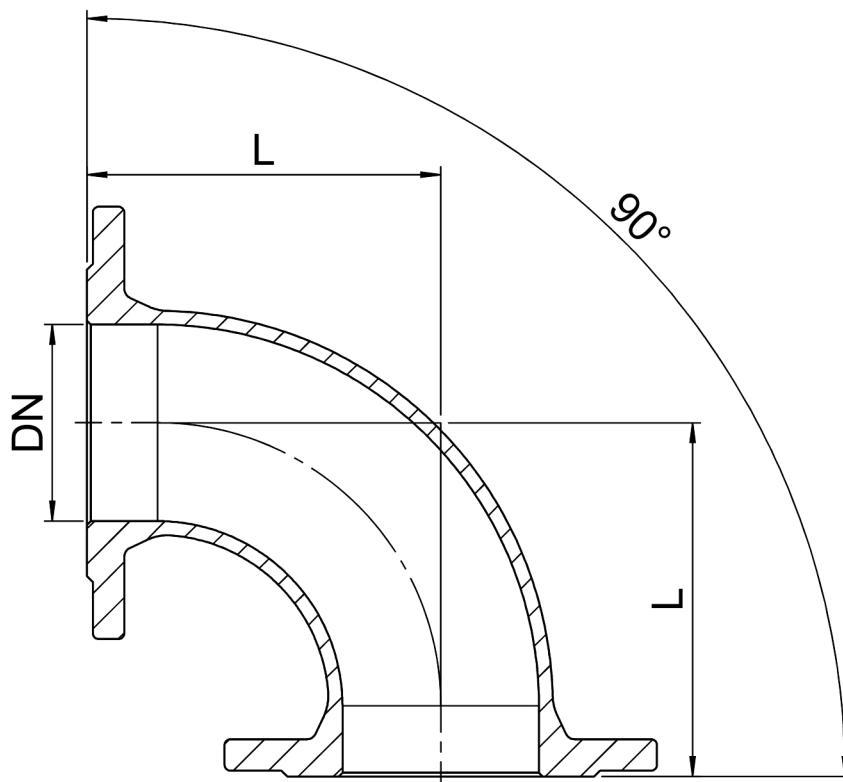
- Ductile iron fitting to EN 545.
- Body of min. GJS-400-15 (GGG-40).
- Epoxy coated to DIN 3476 and GSK internally and externally.



BELGAQUA

Expect ... **AVK**

The designs, materials and specifications shown are subject to change without notice due to the continuous development of our product range.



**Component list:**

|            |              |
|------------|--------------|
| 1. Fitting | Ductile Iron |
|------------|--------------|

Components may be substituted with equivalent or higher class materials without prior notification.

**Reference nos. and dimensions:**

| AVK ref. no.    | DN<br>mm | Flange<br>drilling | L<br>mm | Theoretical<br>weight/kg |
|-----------------|----------|--------------------|---------|--------------------------|
| 712-0040-06-101 | 40       | PN10/16            | 140     | 5.2                      |
| 712-0050-06-101 | 50       | PN10/16            | 150     | 6.4                      |
| 712-0065-06-101 | 65       | PN10/16            | 165     | 8.2                      |
| 712-0080-06-101 | 80       | PN10/16            | 165     | 9.4                      |
| 712-0100-06-101 | 100      | PN10/16            | 180     | 12                       |
| 712-0125-06-101 | 125      | PN10/16            | 200     | 18                       |
| 712-0150-06-101 | 150      | PN10/16            | 220     | 19                       |
| 712-0200-06-100 | 200      | PN10               | 260     | 29                       |
| 712-0200-06-101 | 200      | PN16               | 260     | 28                       |
| 712-0250-06-100 | 250      | PN10               | 350     | 46                       |
| 712-0250-06-101 | 250      | PN16               | 350     | 46                       |
| 712-0300-06-100 | 300      | PN10               | 400     | 65                       |
| 712-0300-06-101 | 300      | PN16               | 400     | 65                       |
| 712-0350-06-100 | 350      | PN10               | 450     | 85                       |
| 712-0350-06-101 | 350      | PN16               | 450     | 91                       |
| 712-0400-06-100 | 400      | PN10               | 500     | 108                      |
| 712-0400-06-101 | 400      | PN16               | 500     | 118                      |
| 712-0450-06-101 | 450      | PN16               | 550     | 161                      |
| 712-0500-06-100 | 500      | PN10               | 600     | 168                      |
| 712-0500-06-101 | 500      | PN16               | 600     | 197                      |
| 712-0600-06-100 | 600      | PN10               | 700     | 269                      |
| 712-0600-06-101 | 600      | PN16               | 700     | 381                      |

The designs, materials and specifications shown are subject to change without notice due to the continuous development of our product range.